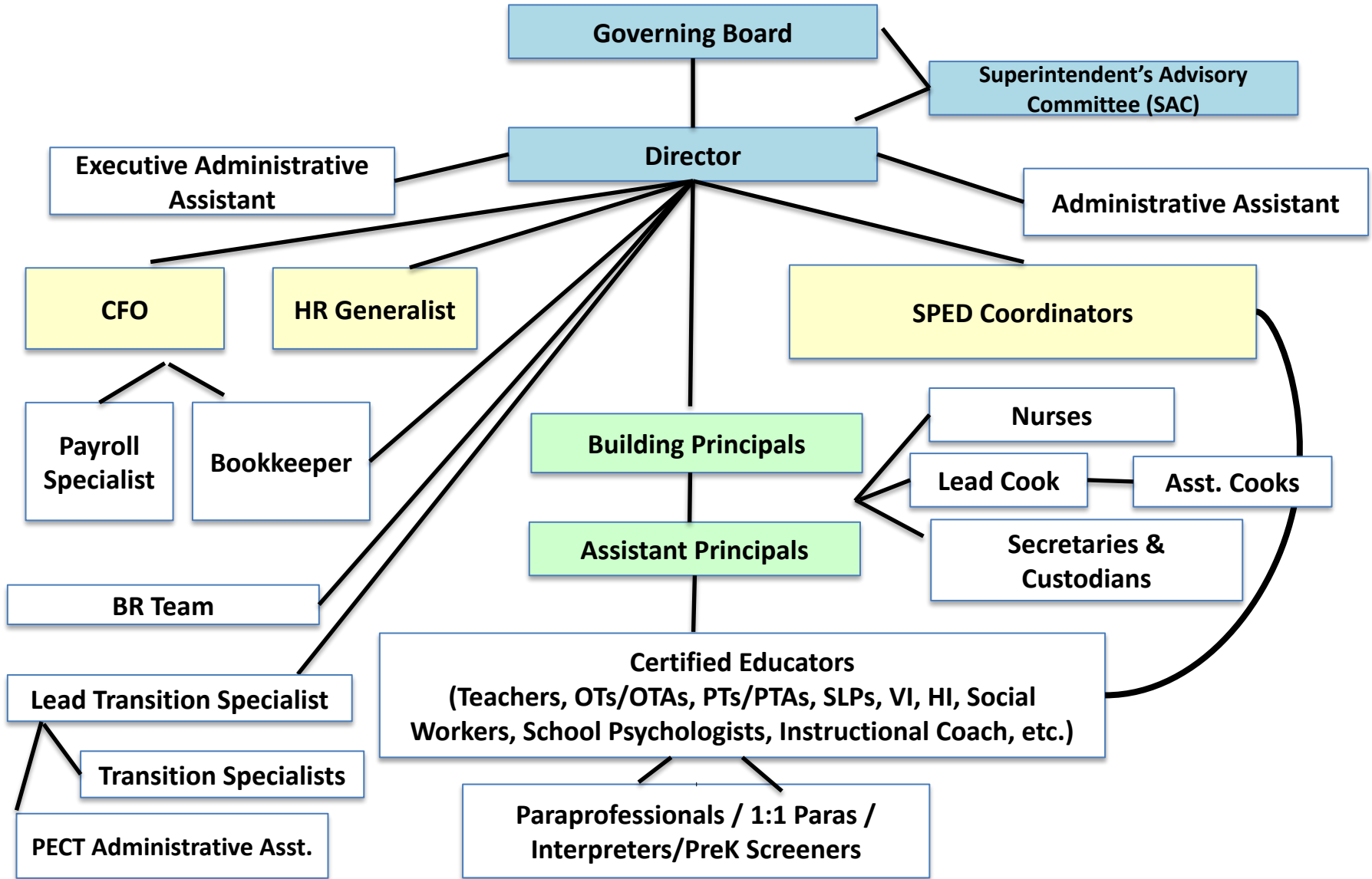


BHASED Organizational Chart

Revised 4/14/26



***This organizational chart also serves as the process for the BHASED Chain of Command (Titles in blue, yellow, and green). For example: The SPED Coordinators, CFO, and HR Generalist are next in the hierarchy after the Director; followed by the Building Principals; and then the Building Asst. Principals. Staff are to start with their immediate supervisor with questions, concerns, etc.**